

# Zirkonzahn<sup>®</sup>

*Human Zirconium Technology*



**100% PRETTAU<sup>®</sup> ZIRCONIA - MADE BY CAD/CAM**

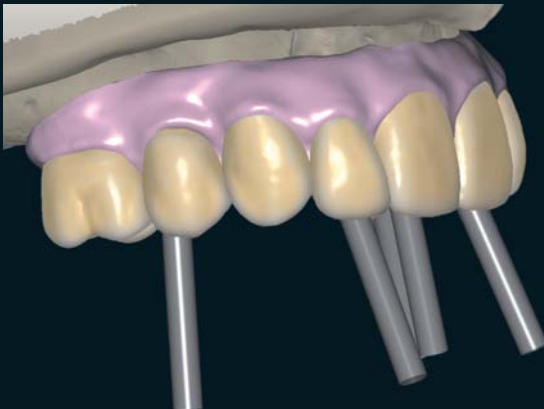
*“Zirconia needs heroes“ Enrico Steger*

## *Upper & lower set-up with software function Prettau® Bridge Element*

In agreement with the treating dentist, we chose to make Prettau® Zirconia bridge restorations on 5 implants in the upper and 4 implants on the lower arch.

First up we scanned the models and diagnostic set-up and imported them into the modeling software. Then we chose suitable teeth from the Zirkonzahn tooth library and implemented the diagnostics with the Prettau® Bridge Element software function (Software-Module CAD/CAM Prettau® fully anatomic).

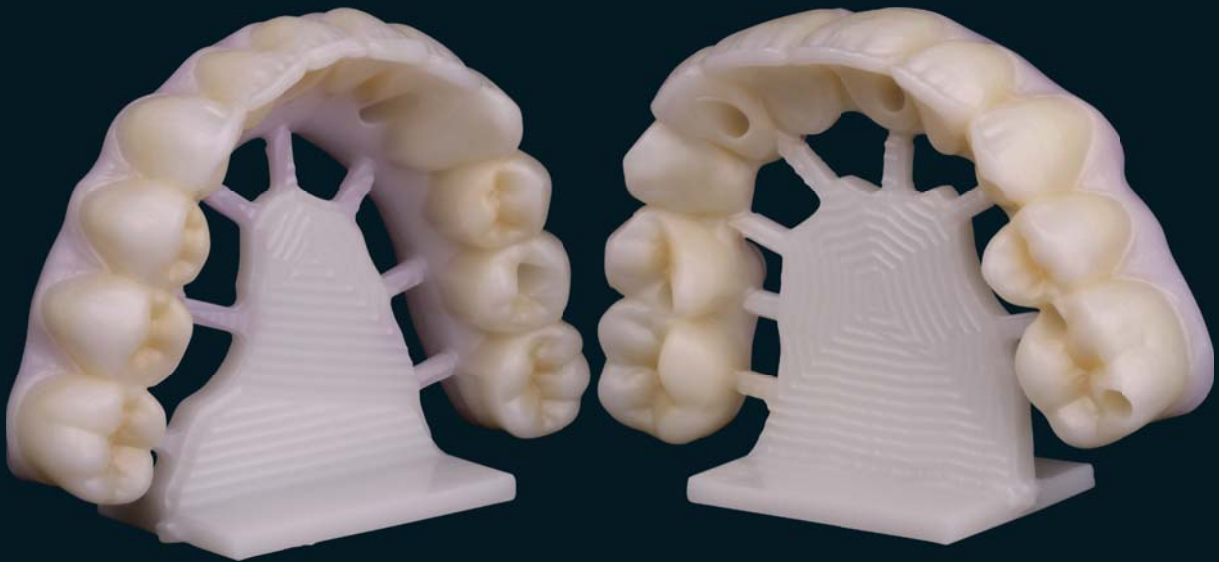
The upper was set up first; then the lower adapted to it. The occlusion was perfected and the gingiva was modeled virtually. Following, we tried in a resin temporary made from Temp Basic. Subsequently, the left side of the prosthesis was slightly lifted virtually. We milled the final modellation in Prettau® Zirconia, finalized contours and coloured the restoration with Colour Liquid Prettau® Aquarell. Only thin veneers were layered over the anteriors' labial surfaces and pink gingiva added with ICE Zirkon Ceramics. The final finish was accomplished by staining and glazing.



## *The Prettau® Bridge*

Dr. Emily Batson – University of North Carolina

Adrian Costabile, Mauricio Cuéllar de la Torre and Georg Walcher – Zirkonzahn Education Center



# Zirkonzahn®



*Milled with Zirkonzahn CAD/CAM System 5-TEC*

## HUMAN ZIRCONIUM TECHNOLOGY

*ZIRKONZAHN Worldwide - Tel +39 0474 066 680 - info@zirkonzahn.com - www.zirkonzahn.com*



WEAA5448=

*All information is subject to change. Errors and omissions excepted. Version: 05.12.2012*